



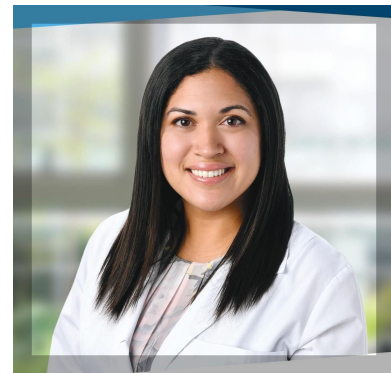
---

## APRIL 2021

---

### President's Message

Greetings! Onboarding programs are a recent "hot topic" in the PA workforce. PA didactic and clinical preparation is robust, with over 2000 hours in clinical rotations. On-the-job training, however, can vary from full support to limited support, depending on the facility. On labor and delivery (L&D), several conditions need to be mastered early on. The EMR system, for instance, is necessary for the rapid ordering of blood products. Postpartum hemorrhage is a leading cause of maternal mortality and needs a quick, accurate response. Similarly, assessing for hypertensive disorders, cardiac disorders, and venous thromboembolism is critical. Once the emergencies are well understood, it is essential to manage complications during labor, such as shoulder dystocia and obstetric anal sphincter injuries (OASIS).



Today, I am sharing an article on onboarding the L&D PA. I hope it will be helpful to you. With the combination of reviewing ACOG practice bulletins, understanding current institutional policy, and good practice and observation, the new PAs that followed this onboarding model were well-prepared to work in a team environment as valued contributors. As we increase awareness of the need for PAs in OBGYN, this will be a valuable tool for incorporation.

Lastly, while we have tackled our "PAs Guide to OBGYN," the first-ever APAOG virtual conference on "Disparities in Women's Health," and now this onboarding piece, there is still much more to go. We want to make sure all PAs have the opportunity to work in the specialty of their choosing and hope to make it easier to enter Obstetrics and Gynecology. We have more to come, and as always, we would love to hear from you about any comments or concerns. Thank you.

Melissa Rodriguez, DMSc, PA-C

[Access Onboarding Doc Here](#)

---

### APAOG 2021 Virtual Conference

APAOG launched conference registration this month and is very excited for the 2021 virtual experience with women's health professionals from all across the country. Members

only pay \$95 and student members \$25. While this program has not yet been approved for CME credit, we plan to apply for 4.0 AAPA Category 1 CME credits from the AAPA Review Panel. The first 50 registered attendees are guaranteed to receive one of our conference care packages to enjoy the day-of the event. [Register now to secure your spot!](#)

This event is not possible without the support and partnership of our sponsors. We thank all of our past supporters, and welcome new partners. This year's virtual format creates some unique and exciting ways for you to sponsor and support the event. Please note, some of these opportunities are limited and are expected to go fast! [Click here for more information!](#)



## Welcome

Join us in welcoming our new Publications/ Public Relations Chair, Morgan Bechtle, PA-C. Morgan is a board certified physician assistant, practicing in Family Medicine with a special interest in women's health. She grew up in the Virginia Beach area and moved to Florida where she completed her undergraduate studies at the University of Florida. Morgan is a recent PA graduate from Drexel University in Philadelphia, PA. She currently resides in Norfolk, VA and when not working with patients, Morgan enjoys hiking, kayaking, researching medical history, and reading for her book club.



## Resources For You

APAOG launched the new [Women's Health Resource Center](#) page on our website last month. This page will be added to throughout the year as more companies and organizations take advantage of our [Partnership Opportunities](#). This creation stemmed from wanting to provide our members with resources and information that may be useful as you continue to treat patients and support women through the healthcare field you are a part of. Please reach out to us with any questions and feel free to share this opportunity with those around you who may find this to be a good fit.




## On-Demand Webinars

**Pelvic Floor and Incontinence - Recognition and Importance in Daily Life**  
*Presented by Heather Isola, MPAS, PA-C*

APAOG is proud to offer members NO COST on-demand CME webinar opportunities that can be

**Pelvic Floor and Incontinence: Recognition and Importance in Daily Life**


Heather Isola MPAS, PA-C  
System Director  
Physician Assistant Services  
Mount Sinai Health System



accessed at your convenience! The webinar series focuses on topics pertinent to PA's practicing in OB/GYN.

abbvie

**UTERINE FIBROIDS: DISEASE STATE, ETIOLOGY & PATHOPHYSIOLOGY, BURDEN OF ILLNESS**



**Uterine Fibroids: Disease State, Etiology, Pathophysiology, Burden of Illness**  
*Presented by Heather Hackbarth, PA-C*

APAOG is now offering additional educational webinars for members to access at their convenience starting this month. These webinars are not eligible for CME, but still focus on pertinent topics related to women's health.

[Click here to access!](#)

**Educational Affiliate Membership**

ACOG needs your help to provide a strong voice for the specialty. Join today in order to add your voice and reap your benefits. **This offer is only available until June 30, 2021** - join for only \$150 (\$245 value!) by clicking below.

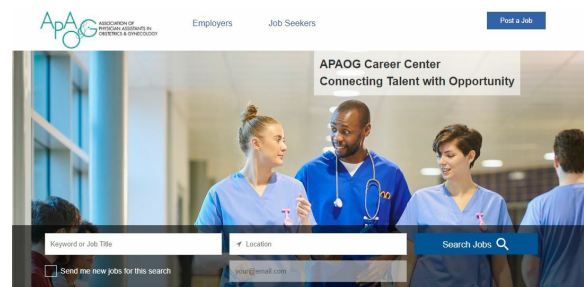


*\*Only available for Fellow, Associate and Affiliate APAOG members.*

[Access ACOG's Membership Discount](#)

**APAOG's Career Center**

APAOG's career center may be the place for you to start your search for a new career, build your resume or post any current opening(s). The easy-to-use website has a variety of different options depending on what you are looking for. Click the button below to begin using the resources available to help both employers and job seekers.

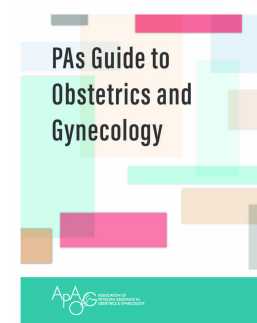


[Start Your Search](#)

**Guide to PAs in OBGYN**

APAOG recently released the PAs Guide to Obstetrics and Gynecology as the newest members-only benefit. This digital document was written by our very own Melissa Rodriguez, DMSc, PA-C and Melanie Jacobs, MMS, PA-C.

Please [click here](#) in order to access the document. You will need to be logged into your account on our website for access. We appreciate any feedback and welcome any questions.



## APAOG Partners

Think Culture Health is a website of the Office of Minority Health at the U.S. Department of Health and Human Services that provides health and healthcare



professionals with information, free continuing education opportunities, resources, and more to learn about culturally and linguistically appropriate services, or CLAS.

Soul Source Therapeutic Devices is a company specializing in the production of high quality vaginal dilators. Our products are manufactured in the US, using materials manufactured and purchased in the US.



## Helpful Links

[APAOG Board of Directors](#)

[Membership Details](#)

[APAOG Committee Chairs](#)

[Career Center](#)

[Student Resources](#)

[Upcoming Events](#)



**Association of Physician Assistants in Obstetrics and Gynecology**

563 Carter Court, Suite B, Kimberly, WI 54136

Phone: 920-560-5620 | Email: [apaog@badgerbay.co](mailto:apaog@badgerbay.co)